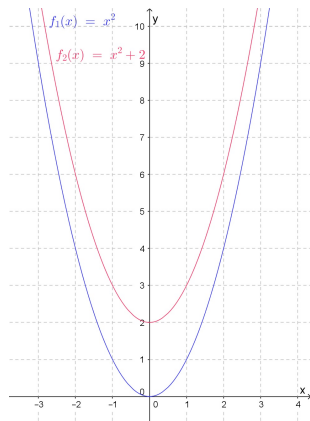


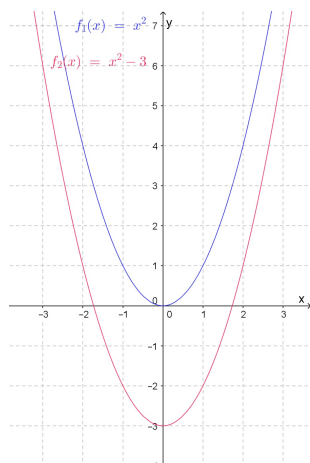
Manipulations graphiques de fonctions : graphes des exemples introductifs

Les figures en bleu sont les fonctions originales ($f_1(x)$), celles en rouge sont les fonctions transformées ($f_2(x)$).

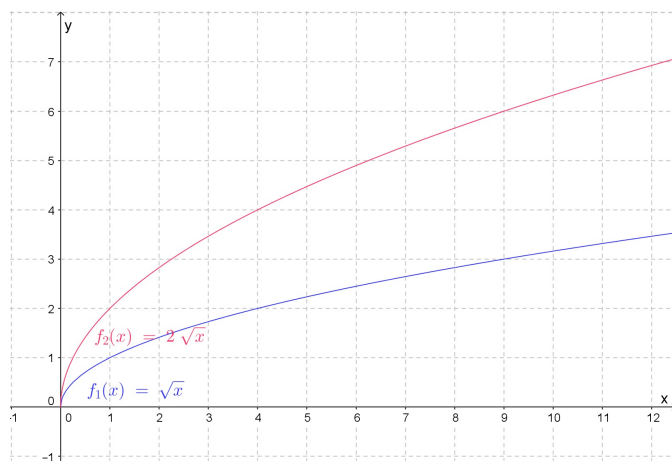
Cas 1



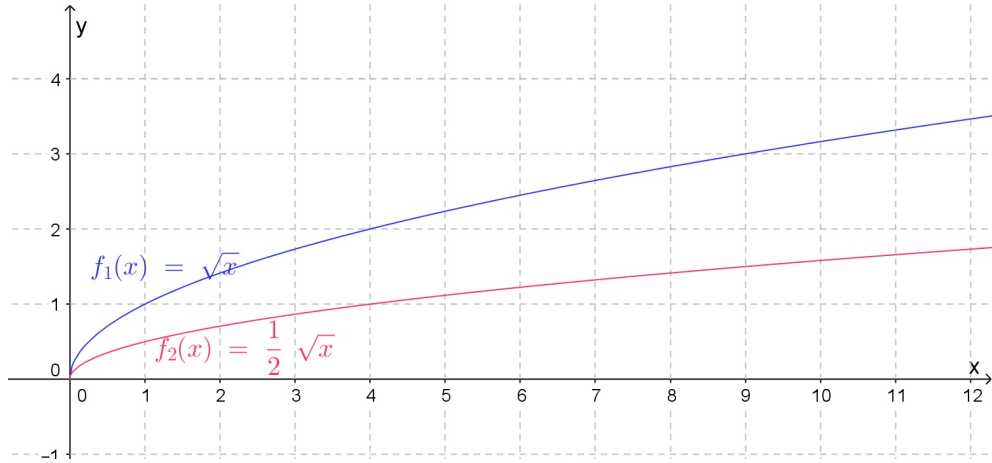
Cas 2



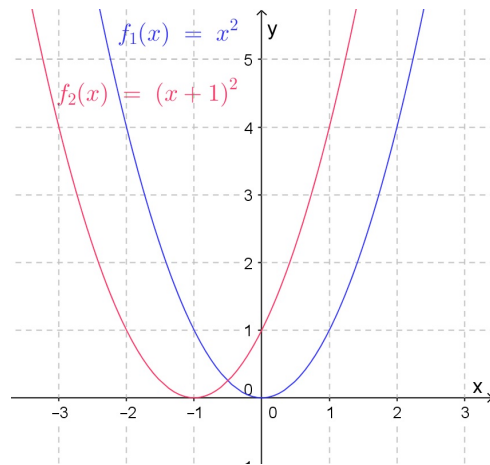
Cas 3



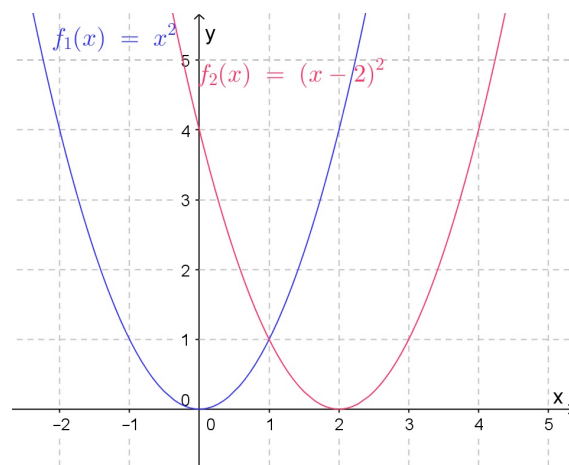
Cas 4



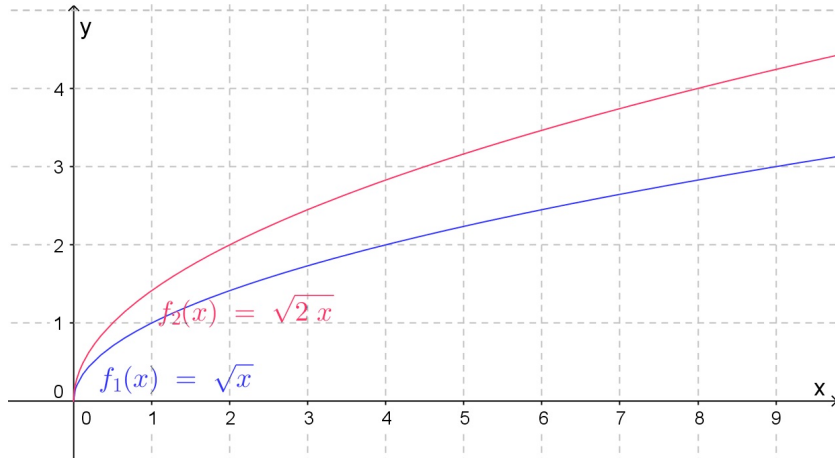
Cas 5



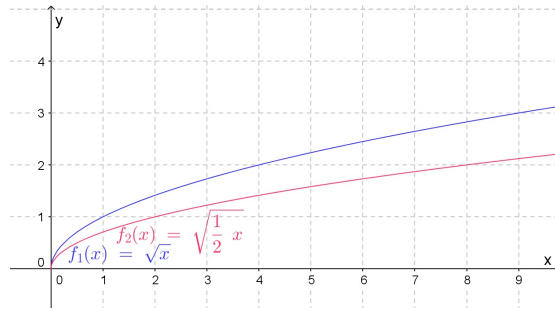
Cas 6



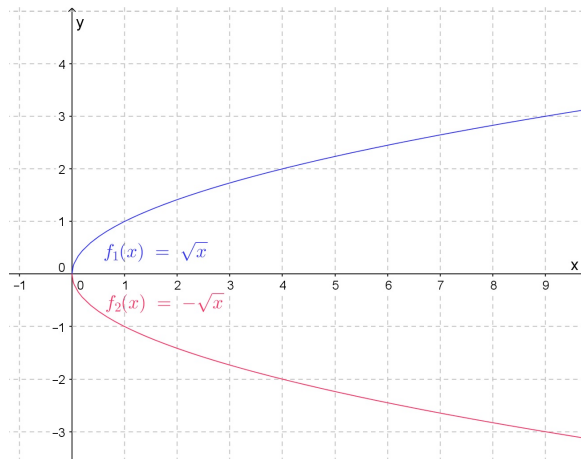
Cas 7



Cas 8



Cas 9



Cas 10

